



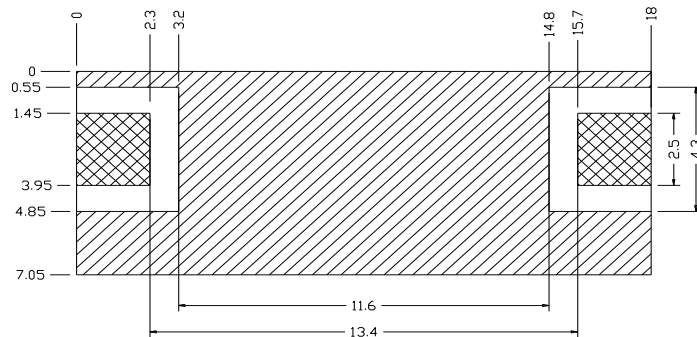
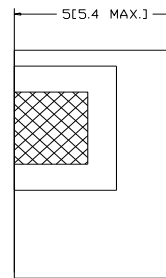
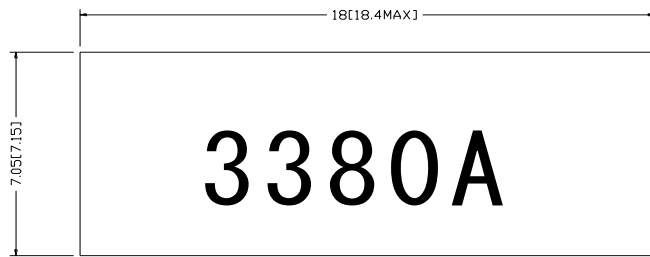
Monolithic Bandpass Filter Specifications

Part No: MBP54R3380S30A
 Date: 10/14/04

Electrical Specifications:

No.	Characteristics	Unit	Typical	Minimum	Maximum
1	Frequency Range	MHz	3380	3365	3395
2	Bandwidth	MHz			30
3	Insertion Loss in BW	dB			3.0
4	Ripple in BW	dB			1.0
5	V.S.W.R.				2.0
6	Attenuation	@ 3220 MHz		35	
		@ 3300 MHz		35	
		@ 3560 MHz		35	
7	In/Out Impedance	Ohm	50		
8	Operation Temperature	°C	-30 to +85		

Dimensions:



Tolerance unless otherwise specified: .XX: ± 0.15

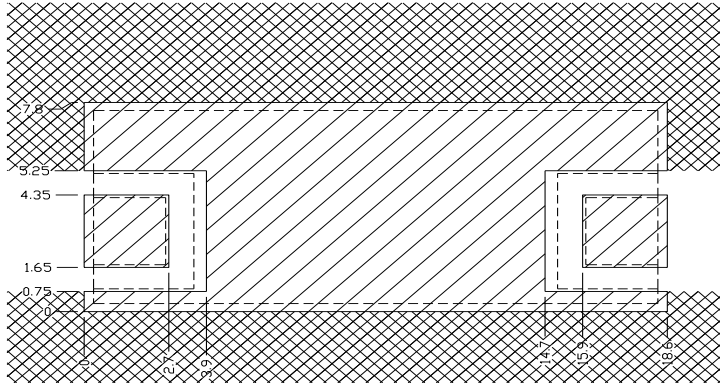
Dimension Unit :mm

- : GND
- : In/Out Port



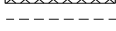
Footprint:



MCV
TECHNOLOGIES, INC.



Dimension Unit :mm

-  : Exposed conductor
-  : Solder resist over conductor
-  : Filter Outline