

Features

- Low Insertion Loss
- High Attenuation
- Compact Size
- Surface Mount

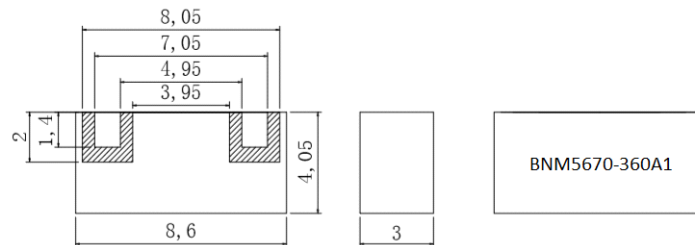
Descriptions

Surface mount mono-block ceramic bandpass filter developed for U-NII-2C & 3 802.11 band applications.

Electrical Specifications

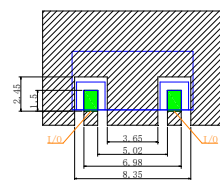
Parameter	Unit	Specification
Center Frequency (Fc)	MHz	5670
Passband Frequency Range	MHz	5490 ~ 5850
Insertion Loss in Passband	dB	2.5 max
Ripple in Passband	dB	1.3 max
Return Loss(VSWR) in Passband	dB	10 min
Attenuation	dB	50 min @ 5150 ~ 5330MHz
Operating Input Power	Watts	1 CW max
IN/OUT Impedance	Ohm	50
Operating Temperature	°C	-40 ~ +85
Dimensions	mm	8.6 x 4.1 x 3.0 (L x W x H)
RoHS	-	Yes

Mechanical Drawing & Recommended PCB Pattern



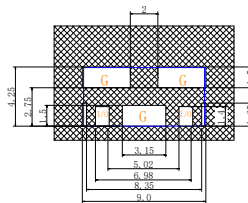
Dimensions in mm

Tolerance: ± 0.25



Electrode
I/O

I/O Pads must be connected to 50 Ω impedances.



Electrode
Solder Land

G: Ground
Tolerance: ± 0.20 mm
I/O: Input/Output