

Features

- Low Insertion Loss
- High Attenuation
- Compact Size
- Surface Mount

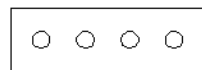
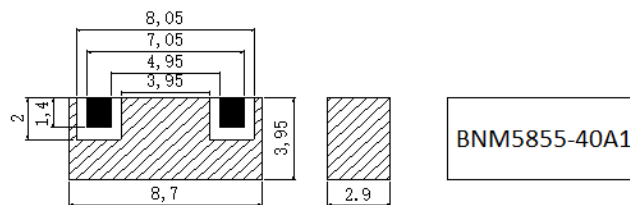
Descriptions

Surface mount mono-block ceramic bandpass filter developed for U-NII-3 802.11 band applications.

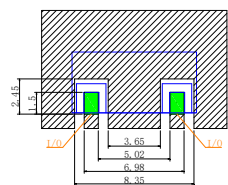
Electrical Specifications

Parameter	Unit	Specification
Center Frequency (Fc)	MHz	5855
Passband Frequency Range	MHz	5835 ~ 5875
Insertion Loss in Passband	dB	2.5 max
Ripple in Passband	dB	1.0 max
Return Loss(VSWR) in Passband	dB	10 min
Attenuation	dB	20 min @ 5725 ~ 5765 MHz
		5 min @ 5000 ~ 5690 MHz
		30 min @ 700 ~ 2700 MHz
Operating Input Power	Watts	1 CW max
IN/OUT Impedance	Ohm	50
Operating Temperature	°C	-40 ~ +85
Dimensions	mm	8.7 x 4.0 x 2.9 (L x W x H)
RoHS	-	Yes

Mechanical Drawing & Recommended PCB Pattern

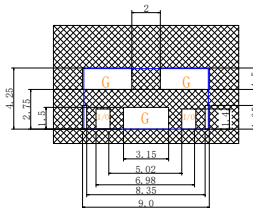


Dimensions in mm
Tolerance: ± 0.25



Electrode
I/O

I/O Pads must be connected to 50Ω impedances.



Electrode
Solder Land

G: Ground
Tolerance: ± 0.20mm
I/O: Input/Output