



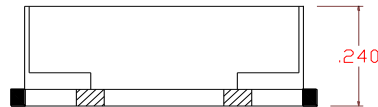
## Ceramic Bandpass Filter Specification

Part No: BPM1006-70A1  
 Date: 10/25/08

Specification:

No.	Characteristics	Unit	Typical	Minimum	Maximum
1	Center Frequency	MHz	1006		
2	1 dB Bandwidth	MHz		60	
3	3 dB Bandwidth	MHz		70	
4	Insertion Loss @ Fc	dB			2.5
5	Return Loss @ Fc +/- 24 MHz	dB		15.0	
6	Attenuation	@1065.5~1165 MHz		22.5	
		@874~946.5 MHz		12.0	
		@1198~1318 MHz		53	
		@694~814 MHz		50	
7	Amplitude flatness	Linear	0.15@ Fc+/-24 MHz, 0.1@ Fc+/-12 MHz		
	Parabolic	0.3@ Fc+/-24 MHz, 0.2@ Fc+/-12 MHz			
8	Group Delay Variation (max.)	Linear	0.5@ Fc+/-24 MHz, 0.3@ Fc+/-12 MHz		
		Parabolic	2.7@ Fc+/-24 MHz, 1.4@ Fc+/-12 MHz		
9	Input Power	W	1 max		
10	In/Out Impedance	ohm	50		
11	Operation Temperature	C	-40 to +85		

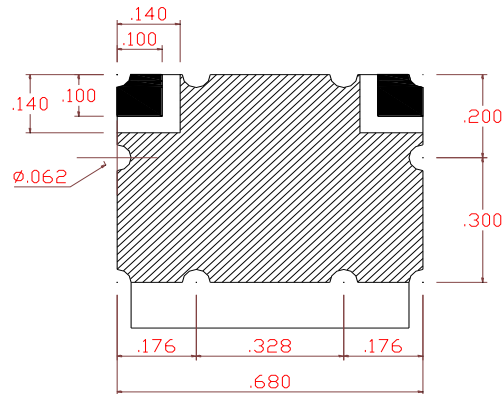
Mechanical Drawing:



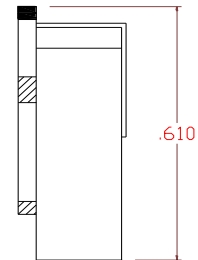
**Front Side**

I/O Port  
 Ground

Tolerance unless otherwise specified : ±0.01



**Bottom Side**



**Right Side**