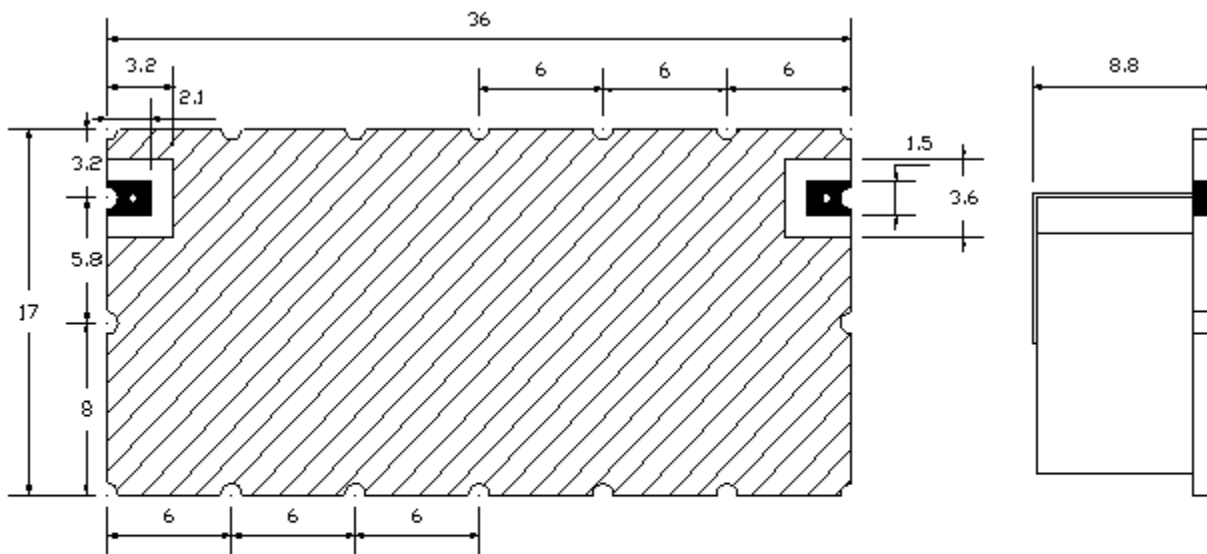



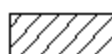
### Electrical Specifications

No.	Parameter	Unit	Specification
1	Center Frequency	MHz	1090
2	Frequency Range	MHz	$F_c \pm 4\text{MHz}$ (1086~1094)
3	Insertion Loss at $F_c$	dB	7.0 max.
4	Ripple in BW	dB	2.0 max.
5	Return Loss in BW	dB	13 min.
6	Attenuation	dB	35 min. @ $F_c \pm 12\text{MHz}$
			45 min. @ $F_c \pm 25\text{MHz}$
7	Input Power	W	1W max.
8	In / Out Impedance	Ohm	50
9	Operating Temp.	°C	-30 ~ +70
10	RoHS	-	Yes

### Dimensions (unit: mm)



 :I/O PORT

 :GRUND

**TOLERANCE UNLESS  
SPECIFIED : +/- 0.2**

**Unit : mm**



Simulation

