

### Features

- Low Insertion Loss
- High Attenuation
- Surface Mount

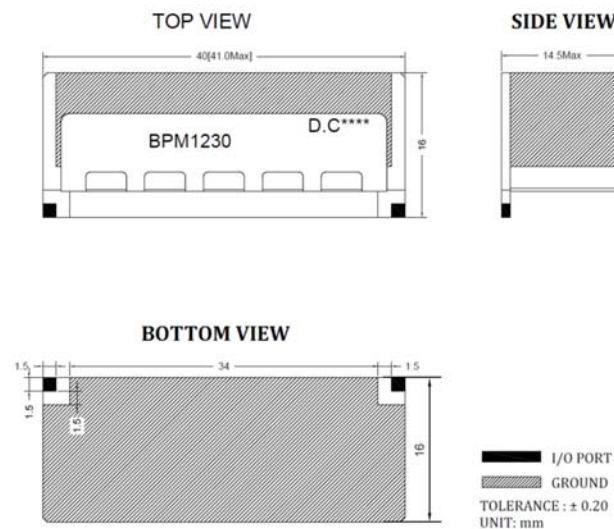
### Descriptions

Surface mount ceramic bandpass filter developed for GPS / GNSS L band applications.

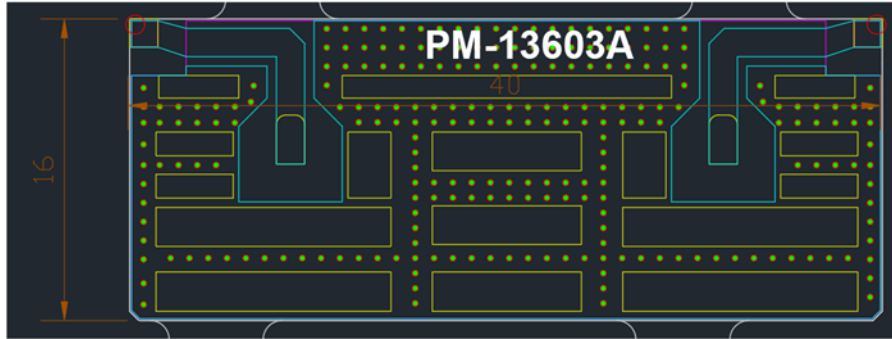
### Electrical Specifications

Parameter	Unit	Specification
Center Frequency (Fc)	MHz	1230
Passband Frequency Range	MHz	1160 ~ 1300
Insertion Loss in Passband	dB	2.0 dB max
Ripple in Passband	dB	1.0 dB max
Return Loss(VSWR) in Passband	dB	15.0 min
Attenuation	dB	35 min @ 664 ~ 804 MHz
		20 min @ 806 ~ 1100 MHz
		25 min @ 1103 ~ 1127 MHz
		20 min @ 1131.6 MHz
		18 min @ 1319 ~ 1525 MHz
		40 min @ 1526 ~ 1636 MHz
		40 min @ 1670 ~ 1680 MHz
35 min @ 2030 ~ 2110 MHz		
Group Delay Variation	nS	13 max
Power Handling	watt	3 CW max
IN/OUT Impedance	Ohm	50
Operating Temperature	°C	-40 ~ +85
Dimensions (max)	mm	40.0 x 16.0 x 14.5 (W x D x H)
RoHS	-	Yes

### Mechanical Drawing



## PCB Layout



## Electrical Performance

