

Features

- Low Insertion Loss
- High Attenuation
- Compact Size
- Surface Mount

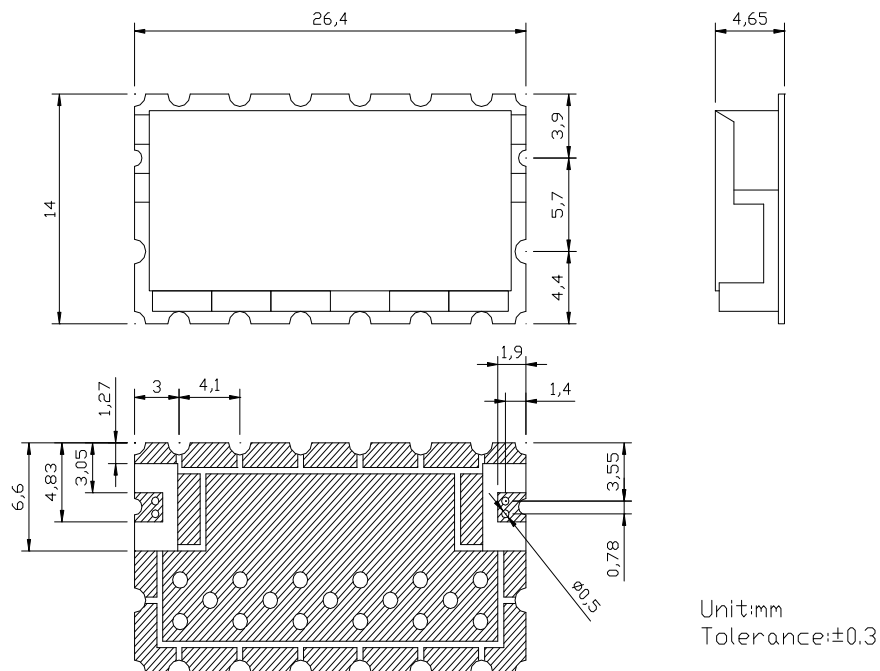
Descriptions

Surface mount ceramic bandpass filter developed for S band applications.

Electrical Specifications

Parameter	Unit	Specification
Center Frequency	MHz	2442.5
Passband Frequency Range	MHz	2400 ~ 2485
Insertion Loss in Passband	dB	2.0 max
Ripple in Passband	dB	1.0 max
Return Loss (VSWR) in Passband	dB	14 min
Attenuation at Reject Band	dB	50 min @ 5 ~ 2300MHz
		50 min @ 2580 ~ 2625MHz
		50 min @ 4970MHz
Power Handling	watt	2.0 CW
In/Out Impedance	Ohm	50
Operating Temperature	°C	-40 ~ +85
Dimensions	mm	26.4 x 14 x 4.65 (L x W x H)
RoHS	-	Yes

Mechanical Drawing



Electrical Response

