

## RF Filter Specification

Part No: BPX2600-200C1

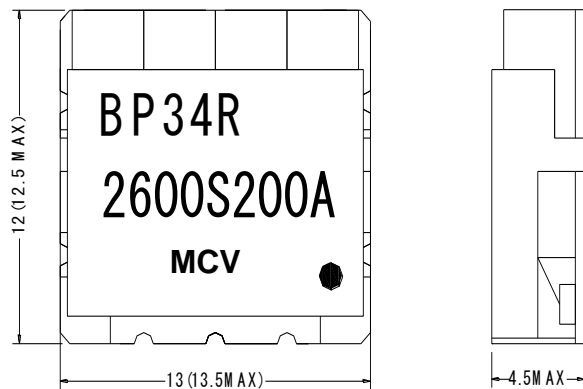
Date:

**Specification:**

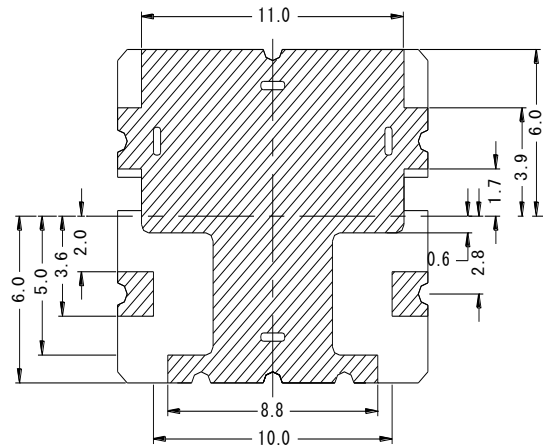
No.	Characteristics	Unit	Typical	Minimum	Maximum
1	Frequency Range	MHz	2600	2500	2700
2	Band Width	MHz			100
3	Insertion Loss in BW	dB			1.8
4	Ripple in BW	dB			1.0
5	V.S.W.R.				1.5
6	Attenuation	@ 1800 MHz		35	
		@ 3300 MHz		30	
7	In/Out Impedance	Ohm	50		

**Dimensions:**

TOP VIEW



BOTTOM VIEW



TOLERANCE : .X ±0.3  
 .XX ±0.15  
 DIMENSION UNIT : mm  
 ● : INPUT PORT

