

### Features

- High Q, Low Insertion Loss
- High Attenuation
- Compact Size

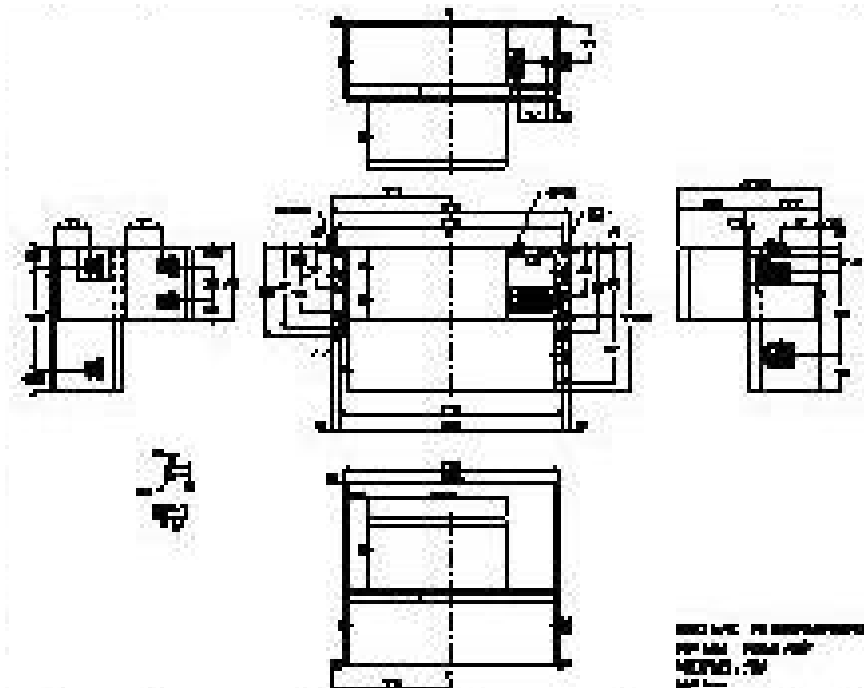
### Descriptions

Connector mount cavity duplexer developed for LTE band-5 applications.

### Electrical Specifications

Parameter	Unit	Specification	
		Low (RX)	High (TX)
Center Frequency	MHz	836.5	881.5
Frequency Range	MHz	824 ~ 849	869 ~ 894
Insertion Loss in BW	dB	2.0 max	1.8 max
Passband Ripple	dB	1.2 max	1.5 max
Return Loss in BW	dB	18.0 min	18.0 min
Attenuation	dBc	25 min @ 821 ~ 851 MHz	20 min @ 866 ~ 896 MHz
Isolation	dB	80 min	
Passive IMD	dBc	3 <sup>rd</sup> : 140 min	
Power Handling	W	150 max	
IN/OUT Impedance	$\Omega$	50	
Operating Temperature	$^{\circ}$ C	-30 ~ +70	
Relative Humidity	%	5 ~ 90	

### Mechanical Drawing



## Electrical Response

