

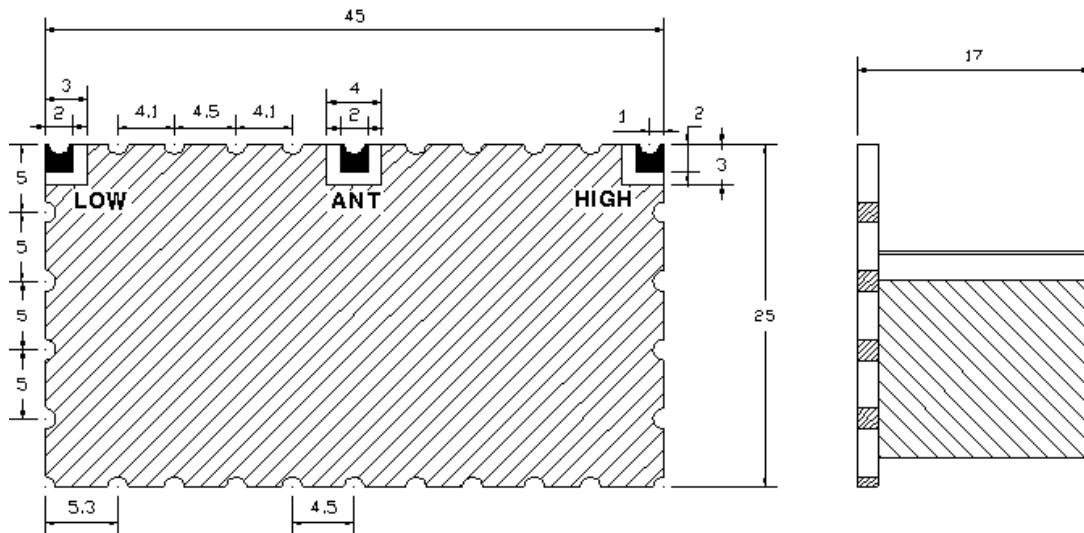
Ceramic Duplexer Specification

Customer:	Date: 01-22-13	Part No. DPM1232-1567-135A1
------------------	-----------------------	------------------------------------

Electrical Specifications

No.	Parameter	Unit	Specifications	
			Low Path	High Path
1	Center Frequency	MHz	1232	1567
2	Bandwidth	MHz	$F_c \pm 67.5$ min. (1164.5~1299.5MHz)	$F_c \pm 67.5$ min.(1499.5~1634.5MHz)
3	Insertion Loss in BW	dB	0.6 max.	0.6 max.
4	Ripple in BW	dB	0.3 max.	0.3 max.
5	Return Loss in BW	dB	15 min.	
6	Attenuation	dB	10 min. @ DC ~ 1065MHz	10min. @ DC ~ 1065MHz
			10 min. @ 1400 ~ 1425MHz	10 min. @ 1400 ~ 1425MHz
			25 min. @1499 ~ 1635MHz	25 min. @1164 ~ 1300MHz
			15 min. @ 1710 ~ 2500MHz	15 min. @ 1710 ~ 2500MHz
7	Input Power	Watt	3 max.	
8	IN/OUT Impedance	Ω	50	
9	Operating Temp. Range	$^{\circ}\text{C}$	-30 ~ +85	

Dimensions [Unit: mm]



■ :I/O PORT

▨ :GRUND

TOLERANCE UNLESS

SPECIFIED : +/- 0.2

Unit : mm