

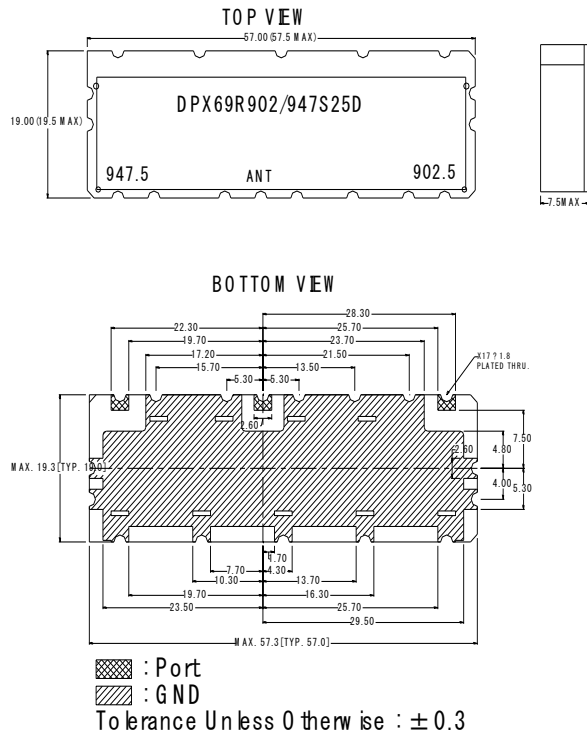
Dielectric Duplexer Specification

Part No: DPX902-947-25D1
 Date: 9/14/06

1. Properties:

No.	Characteristics	Unit	Tx → ANT	ANT → Rx
1	Center Frequency (Fc)	MHz	902.5	947.5
2	Bandwidth	MHz	$F_c \pm 12.5$	$F_c \pm 12.5$
3	Insertion Loss in BW (max.)	dB	3.1	3.1
4	Ripple in BW (max.)	dB	1.6	1.6
5	VSWR in BW (max.)	dB	1.4	1.4
6	Attenuation (min.)	dB	44 (935-960 MHz)	45 (890-915 MHz)
7	In/Out Impedance	Ohm	50	50
8	Input Power	W	2W	
9	Operation Temperature	°C	-30~ +80C	

2. Dimensions:



3. Electrical Performance:

