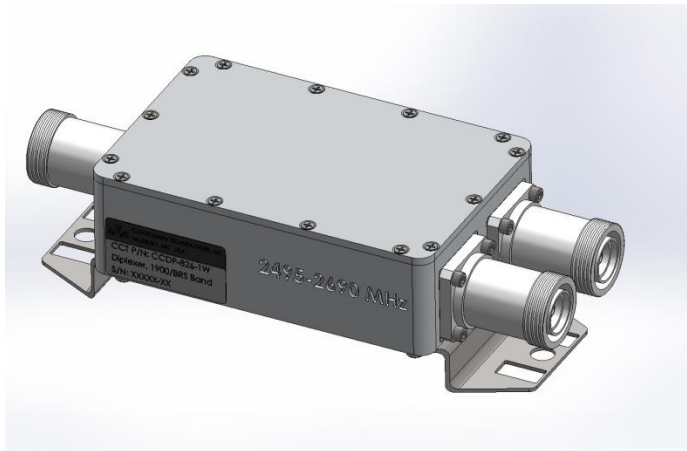


Product Specification



CCDP-826

1900 / BRS Diplexer

Combines 1900 and BRS Bands

Low Loss / High Isolation

Low PIM's -155 dBc

Weatherized to IP-67

Electrical Specifications

PASSBAND

1900 (PCS) PORT	1850 - 2000 MHz
2600 (BRS) PORT	2495 - 2690 MHz

INSERTION LOSS 0.3 dB Max.

RETURN LOSS 24 dB Min.

PORT TO PORT ISOLATION 35 dB Min.

PASSIVE INTERMODS -155 dBc

POWER HANDLING 200 W CW / Avg. Per Port
2 kW Peak

Environmental Specifications

OPERATING TEMPERATURE -20° to +60°C Operating

ENVIRONMENTAL Per ETS-300

WEATHERIZATION Per IP-65 (IP-67 Optional)

LIGHTNING PROTECTION Per EN / IEC 61000 4-5, Level 4

MCV Microwave
Tel: +1(302)877-8079
Web: www.mcv-microwave.com

MCV Microwave
Clearly the Choice!

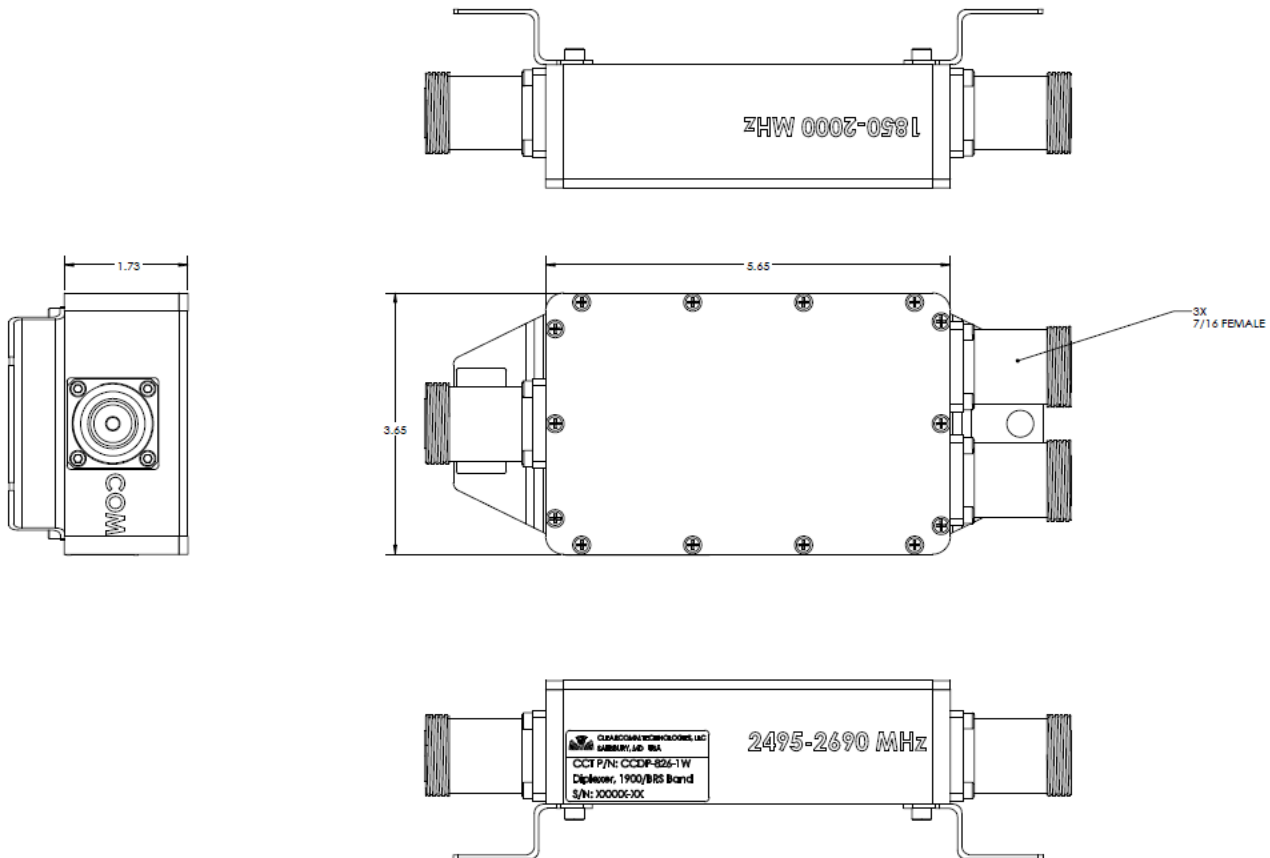
11307 Trussum Pond Road
Laurel, DE 19956
[Mailto: sales@mcv-microwave.com](mailto:sales@mcv-microwave.com)

Product Specification



Mechanical Specifications

CONNECTORS	7/16 DIN Female Connectors (Long Neck)
SIZE	5.93" x 2.96" x 1.6" Excluding connectors.
WEIGHT	Approx.: 3 lbs.



OUTLINE DRAWING