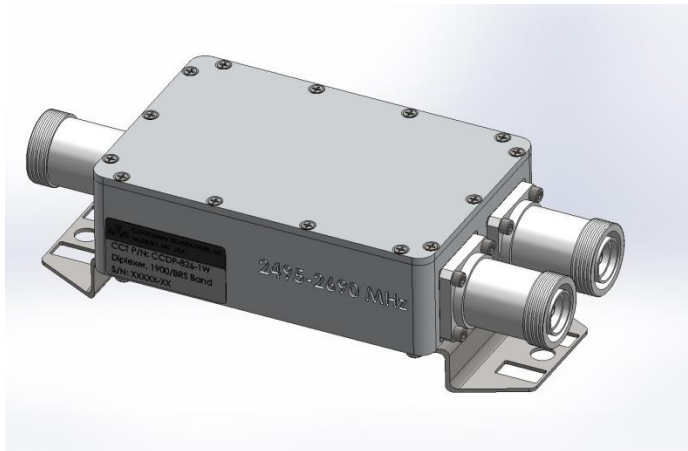


# Product Specification



## CCDP-844

**1900 / WCS Diplexer**

**Combines Bands 2 and 30**

**Low Loss / High Isolation**

**Low PIM's -153 dBc**

**Weatherized to IP-67**

---

## Electrical Specifications

### PASSBAND

1900 (PCS) PORT	1850 - 2000 MHz
2300 (WCS) PORT	2305 – 2360 MHz

INSERTION LOSS                      0.7 dB Max. 0.5 dB Typical

RETURN LOSS                            20 dB Min.

PORT TO PORT ISOLATION            60 dB Min.

PASSIVE INTERMODS                 -153 dBc

POWER HANDLING                    200 W CW / Avg. Per Port  
2 kW Peak

---

## Environmental Specifications

OPERATING TEMPERATURE          -20° to +60°C Operating

ENVIRONMENTAL                        Per ETS-300

WEATHERIZATION                    Per IP-65 (IP-67 Optional)

LIGHTNING PROTECTION            Per EN / IEC 61000 4-5, Level 4

MCV Microwave  
Tel: +1(302)877-8079  
Web: [www.mcv-microwave.com](http://www.mcv-microwave.com)

**MCV Microwave**  
*Clearly the Choice!*

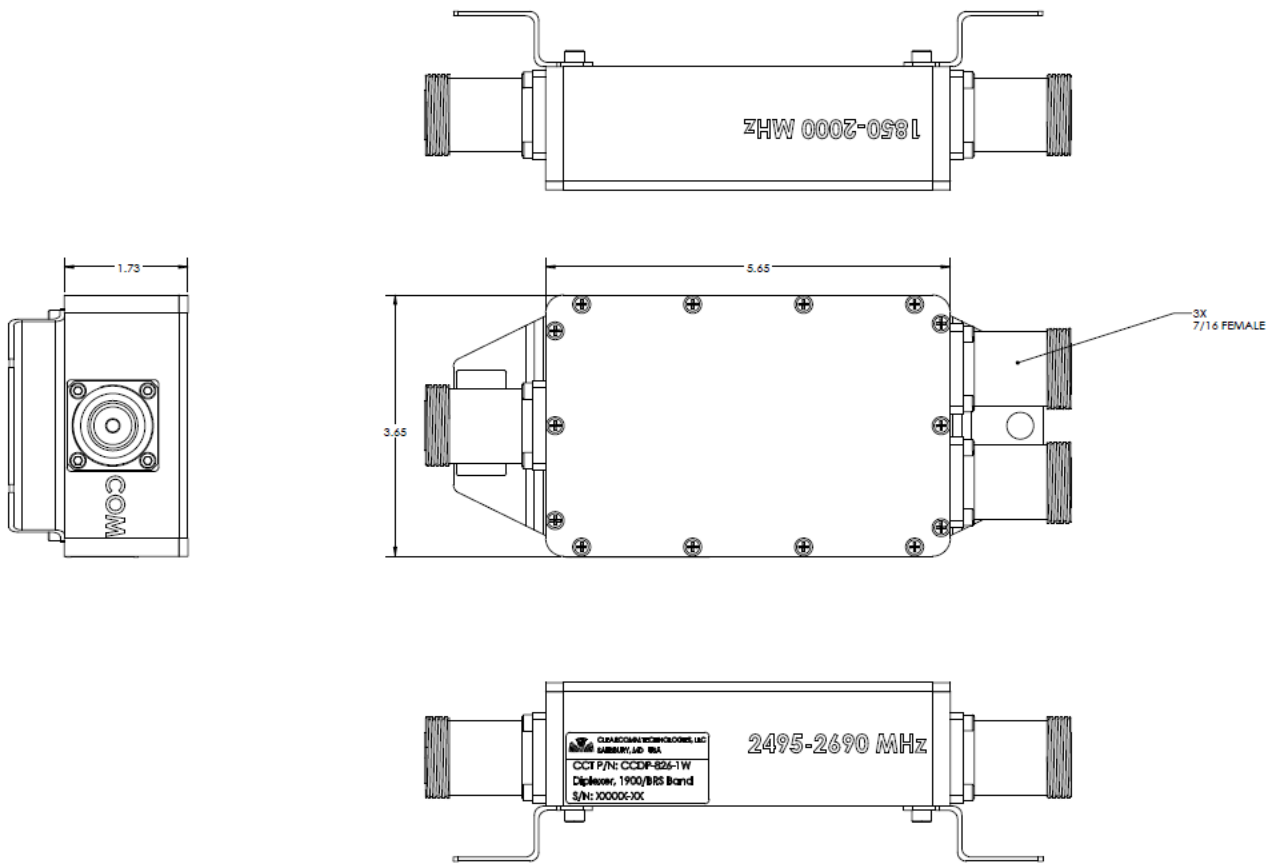
11307 Trussum Pond Road  
Laurel, DE 19956  
[Mailto: sales@mcv-microwave.com](mailto:sales@mcv-microwave.com)

# Product Specification



## Mechanical Specifications

CONNECTORS	7/16 DIN Female Connectors (Long Neck) Optional: 4.3/10.0, Type 'N'
SIZE	6.77" x 3.68" x 1.85" Excluding connectors.
WEIGHT	Approx.: 4 lbs.



## OUTLINE DRAWING