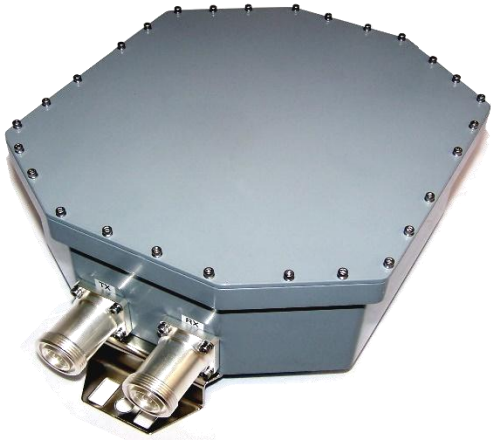


# Product Specification



## CCDP-327

### Duplexer, 850 Band

**Extremely High-Powered Design**

**High Transmit Rejection in Receive Bands**

**Low Loss Design**

---

## Electrical Specifications

PASSBAND	
RECEIVE	824 - 849 MHz
TRANSMIT	869 – 894 MHz
PASSBAND INSERTION LOSS	0.75 dB Max.
INSERTION LOSS VARIATION	0.4 dB Max.
RETURN LOSS	20 dB Min.
ISOLATION	80 dB Min.
PASSIVE INTERMODS	-153 dBc
POWER HANDLING	800 W Avg. / 16 kW Peak

---

## Environmental Specifications

OPERATING TEMPERATURE	-40° to +60°C Operating
ENVIRONMENTAL	Per ETS-300
WEATHERIZATION	Per IP-65 (IP-67 Optional)
LIGHTNING PROTECTION	Per EN / IEC 61000 4-5, Level 4

# Product Specification

## Mechanical Specifications

CONNECTORS

7/16 DIN Female

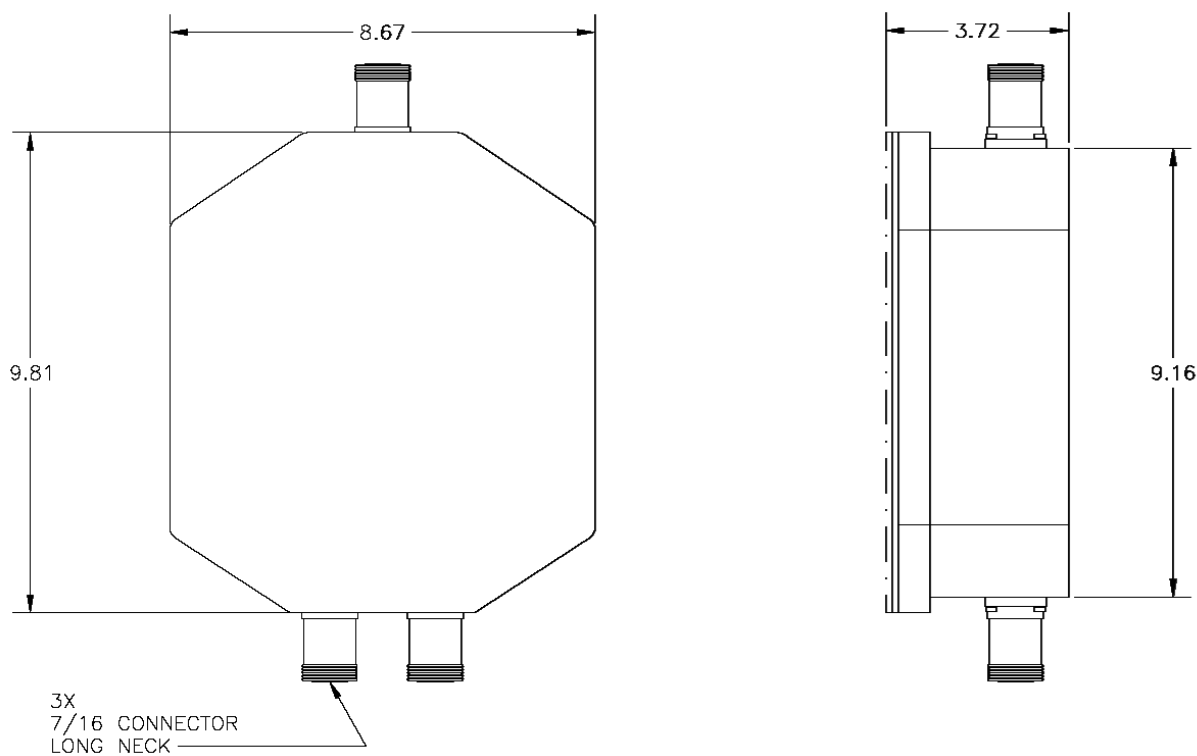
Optional: 4.3/10.0, Type 'N'

SIZE

9.8" x 8.7" x 3.7" Excluding Connectors

WEIGHT

Approx. 15 lbs.



**OUTLINE DRAWING**