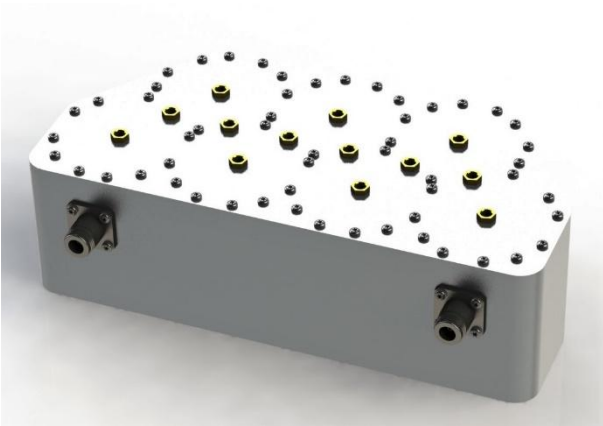


Product Specification



CCRF-199

700 Lower B/C Transmit Filter

- **Passes Band 17 Downlink**
- **Use for Spectrum Clearing**
- **Sharp Out of Band Rejection**

Electrical Specifications

PASSBAND	734 – 746 MHz
PASSBAND INSERTION LOSS	1.0 dB Max.
PASSBAND RETURN LOSS	20 dB Min.
REJECTION	
DC - 698 MHz	50 dB Min.
776 – 894 MHz	50 dB Min.
POWER HANDLING	10W MAX.

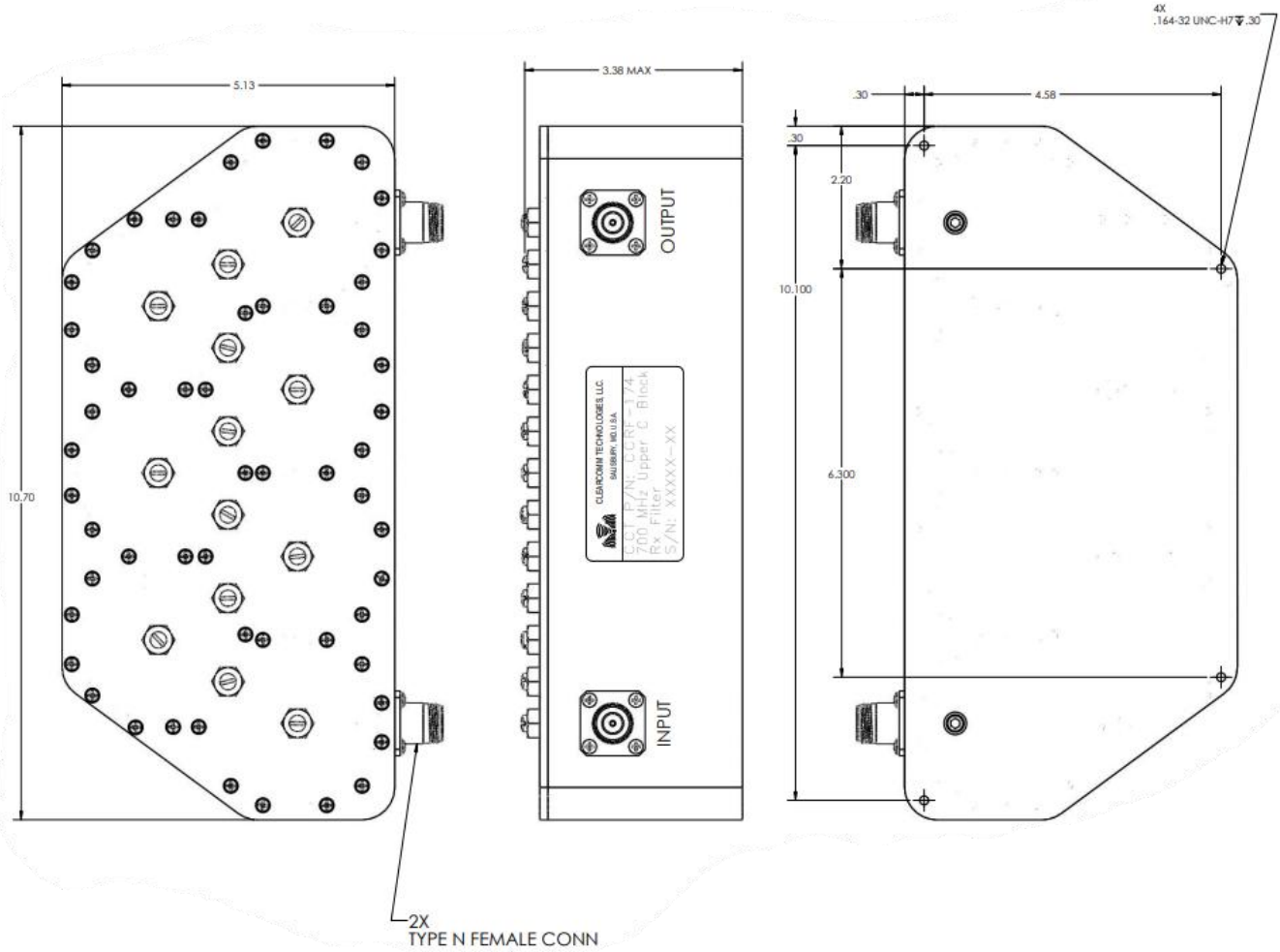
Environmental Specifications

WEATHERIZATION	Per IP-65 (Optional IP-66)
OPERATING TEMPERATURE	-20° to +60°C Operating

Mechanical Specifications

CONNECTORS	Type 'N' Female Optional 4.3/10.0, 7/16 DIN
SIZE	10.7" x 5.2" x 3.4" Excluding Connectors
WEIGHT	Approx.: 10.5 lbs.

Product Specification



OUTLINE DIMENSIONS