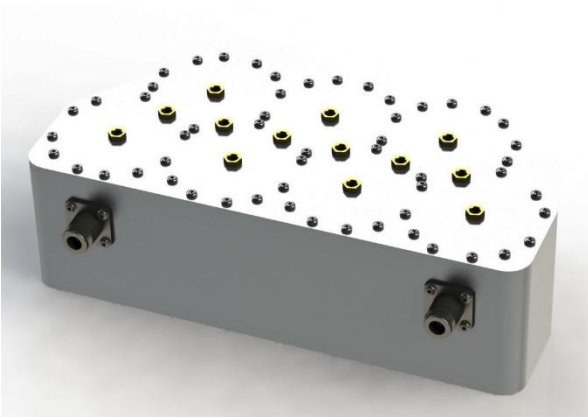


Product Specification



CCRF-174

700 Upper C Transmit Filter

- **Passes Band 13**
- **Use for Spectrum Clearing**
- **Sharp Out of Band Rejection**

Electrical Specifications

PASSBAND	747 - 757 MHz
PASSBAND INSERTION LOSS	1.0 dB Max.
PASSBAND RETURN LOSS	20 dB Min.
REJECTION	
698 – 740 MHz	60 dB Min.
776 - 896 MHz	60 dB Min.

Environmental Specifications

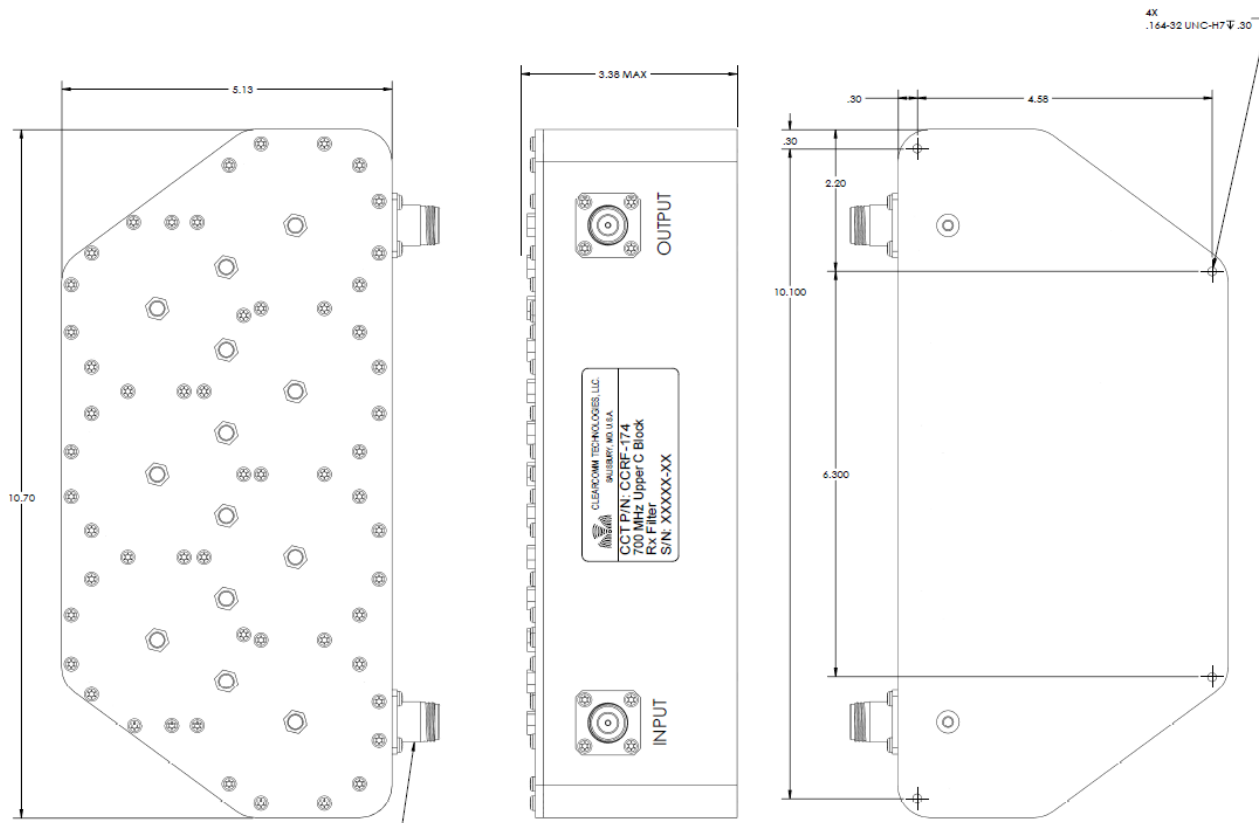
WEATHERIZATION	Per IP-65 (Indoor Use)
OPERATING TEMPERATURE	-20° to +60°C Operating

Mechanical Specifications

CONNECTORS	Type 'N Female, Optional 4.3/10.0, 7/16 DIN
SIZE	10.7" x 5.2" x 3.4" Excluding Connectors
WEIGHT	Approx.: 10.5 lbs.



Product Specification



OUTLINE DIMENSIONS