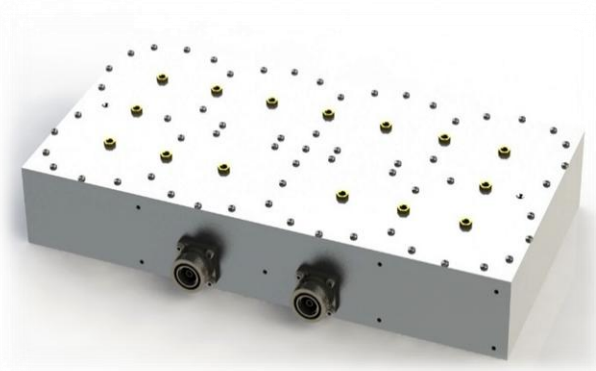


Product Specification



CCTF-79
Filter, 850 B Band Transmit
Extremely High-Powered Design
High Rejection in Receive Bands
Low Loss Design

Electrical Specifications

PASSBAND	880 - 894 MHz
PASSBAND INSERTION LOSS	1.15 dB Max.
INSERTION LOSS VARIATION	0.75 dB Max.
RETURN LOSS	18 dB Min.
REJECTION	
DC – 824 MHz	90 dB Min.
824 - 849 MHz	95 dB Min.
849 – 878 MHz	30 dB Min.
896 - 925 MHz	30 dB Min.
925 - 1000 MHz	90 dB Min.
1000 – 2700 MHz	60 dB Min.
POWER HANDLING	700 W Avg. / CW 12.5 kW Peak

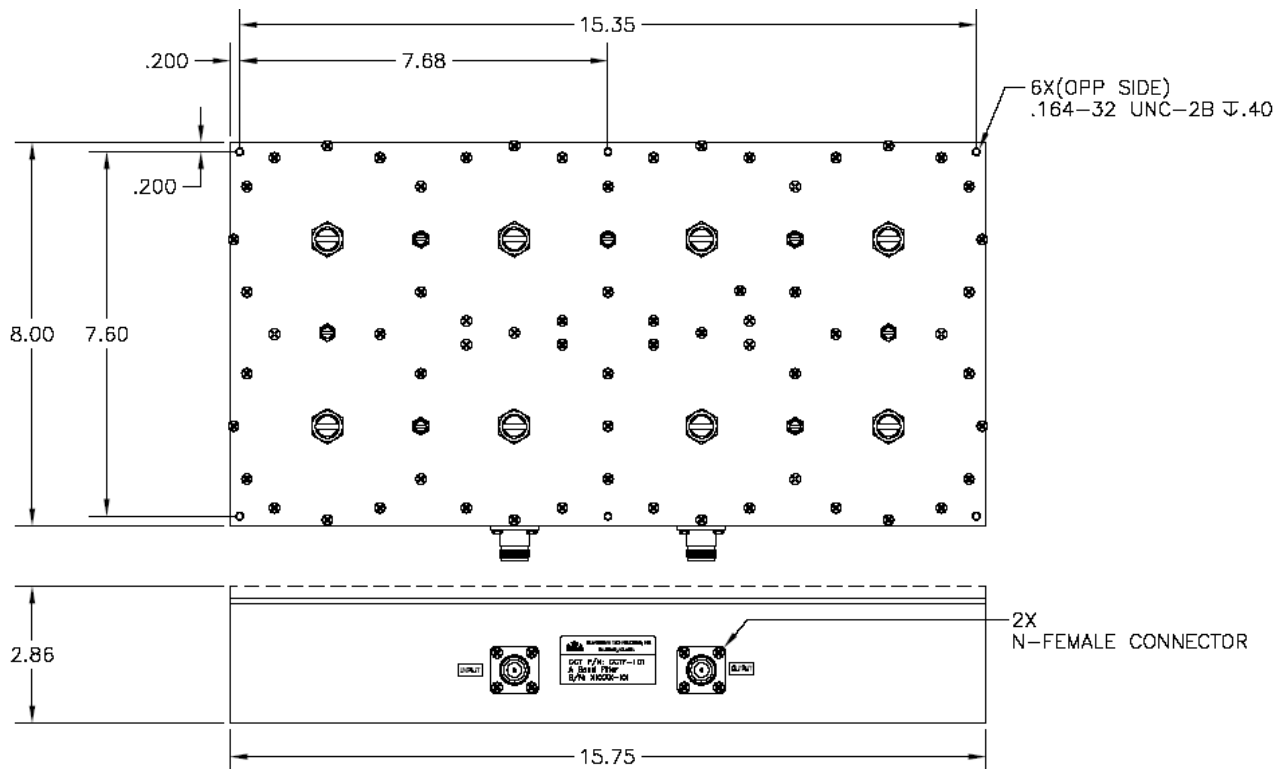
Product Specification

Environmental Specifications

OPERATING TEMPERATURE	-0° to +60°C Operating
ENVIRONMENTAL	Per ETS-300
WEATHERIZATION	Per IP-65
LIGHTENING PROTECTION	Per EN / IEC 61000 4-5, Level 4

Mechanical Specifications

CONNECTORS	7/16 DIN Female Optional: Type 'N'
SIZE	15.8" x 8.0" x 2.9" (See Outline)
WEIGHT	Approx. 18 lbs.



OUTLINE DRAWING