

Product Specification



CCFA-798-XDW

In Band Combiner

- **850 B Band LTE/CDMA**
- **Low Loss Combining**
- **Connector Options – 4310/DIN**
- **Weatherized Construction**

Electrical Specifications

PASSBAND COMMON	835.91–844.75 & 880.91-889.75 MHz
CDMA PORT (F1-F3)	835.91 - 839.60 MHz 880.91 – 884.60 MHz
LTE PORT (CH 2585)	840.25 - 844.75 MHz 885.25 - 889.75 MHz
PASSBAND INSERTION LOSS	0.6 dB Typ. 1.0 dB Max.
PASSBAND RETURN LOSS	20 dB Min.
PORT TO PORT ISOLATION	30 dB Min.
GROUP DELAY (any 1.23 MHz CDMA Channel)	450 nS Max. Variation 700 nS Max. Absolute
POWER HANDLING	100 W CW / Avg. Per Port

Environmental Specifications

OPERATING TEMPERATURE	-20° to +60°C Operating
ENVIRONMENTAL	Per ETS-300
WEATHERIZATION	Per IP-65 (IP-67 Optional)
LIGHTENING PROTECTION	Per EN / IEC 61000 4-5, Level 4

Product Specification

Mechanical Specifications

CONNECTORS

4.3/10.0 (Long Neck)

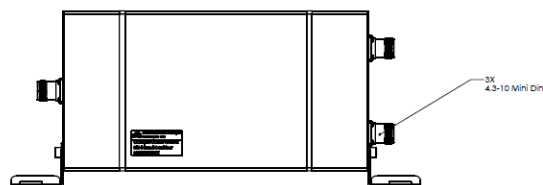
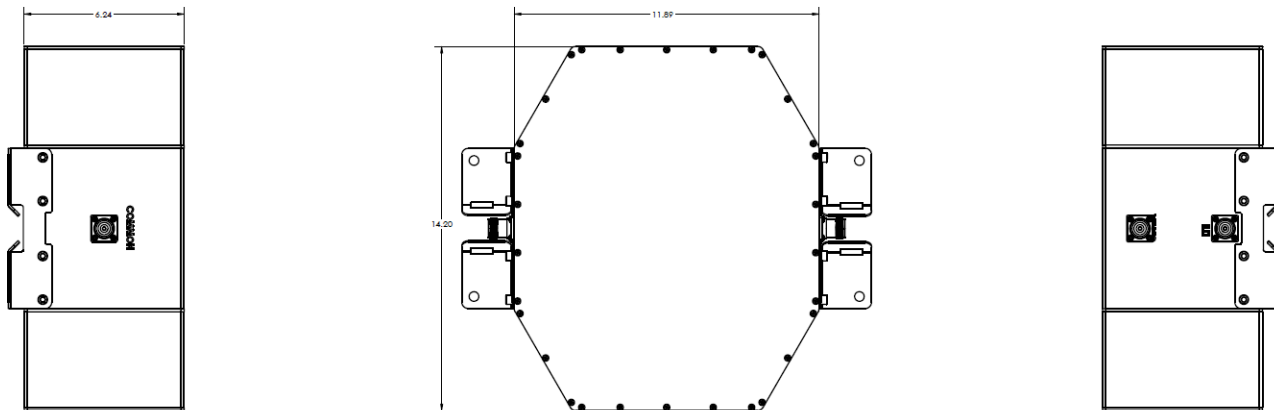
Optional: 7/16 DIN, Type 'N'

SIZE

11.89" x 14.20" x 6.24" Excluding Connectors

WEIGHT

Approx. 54 lbs.



OUTLINE DRAWING