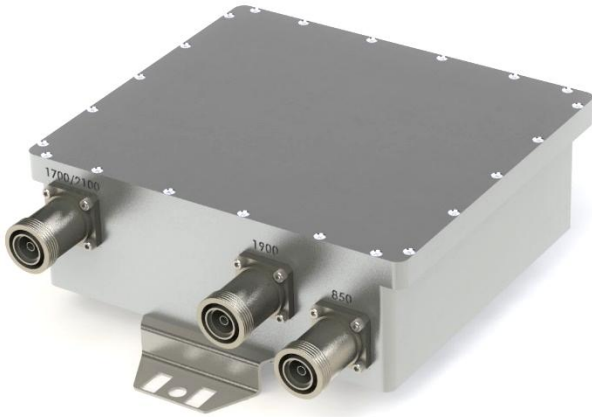


# Product Specification



## CCFA-332

### Multiband Combiner (Triplexer)

- **Covers 800-850, 1900 and AWS Bands**
- **Low Loss / High Isolation**
- **Low PIM Device**
- **Stackable**

---

## Electrical Specifications

### PASSBAND

800+850 BAND PORT	806 - 894 MHz
AWS BAND PORT	1710 - 1755 & 2110 - 2155 MHz
1900 BAND PORT	1850 - 1990 MHz
PASSBAND INSERTION LOSS	0.3 dB Max.
PASSBAND RETURN LOSS	20 dB Min.
PORT TO PORT REJECTION	
800+850 BAND PORT	
1710 - 2155 MHz	75 dB Min.
AWS BAND PORT	
894 AND BELOW	75 dB Min.
1850 - 1990 MHz	75 dB Min.
1900 BAND PORT	
1755 MHz AND BELOW	75 dB Min.
2110 - 2155 MHz	75 dB Min.
PASSIVE INTERMODS	-153 dBc
POWER HANDLING	300 W CW / Avg, 3000 W Peak

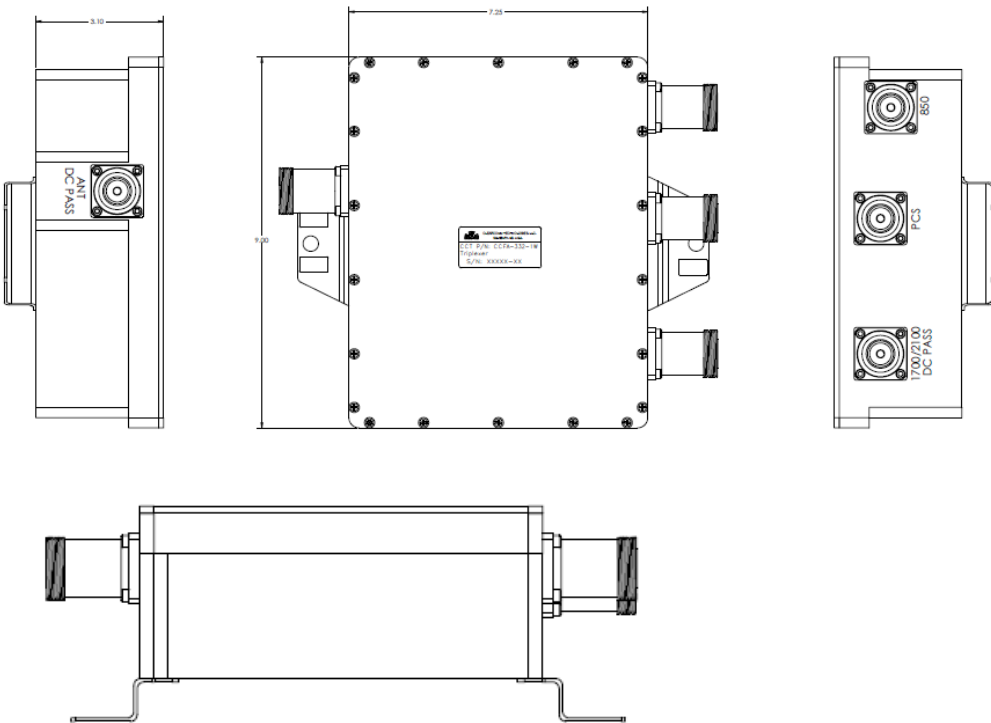
# Product Specification

## Environmental Specifications

OPERATING TEMPERATURE	-40° to +65° Operating
ENVIRONMENTAL	Per ETS-300
WEATHERIZATION	Per IP-65 (IP-67 Optional)
LIGHTNING PROTECTION	Per EN / IEC 61000 4-5, Level 4

## Mechanical Specifications

CONNECTORS	7/16 DIN Female - Long Neck Optional: 4.3/10.0, Type 'N'
SIZE	9.0" x 7.3" x 3.1" Excluding Connectors
WEIGHT	Approx. 8 lbs.



**OUTLINE DRAWING**