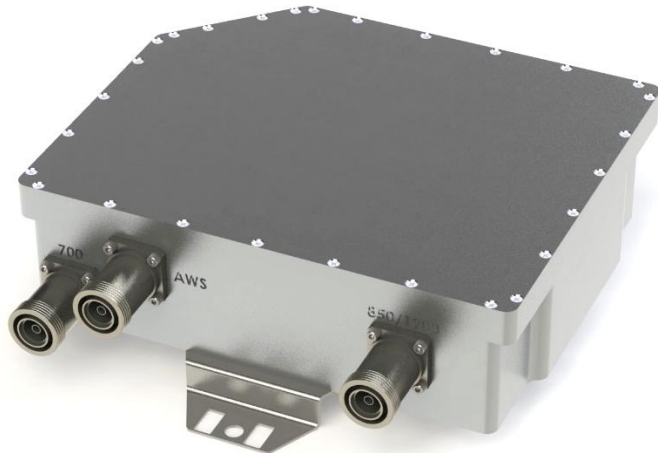


Product Specification



CCFA-501

Multiband Combiner (Triplexer)

- **Covers 700, 850+1900, AWS**
- **Low Loss / High Isolation**
- **Low PIM Device**
- **Stackable**

Electrical Specifications

PASSBAND

700 BAND PORT

698 - 806 MHz

850 + 1900 BAND PORT

824 - 894 MHz & 1850 - 2000 MHz

AWS BAND PORT

1710 - 1755 & 2110 - 2155 MHz

PASSBAND INSERTION LOSS

0.5 dB Max.

PASSBAND RETURN LOSS

20 dB Min.

PORT TO PORT ISOLATION

60 dB Min.

BAND TO BAND ISOLATION

60 dB Min.

PASSIVE INTERMODS

-153 dBc

POWER HANDLING

300 W CW / Avg, 5 kW Peak

Environmental Specifications

OPERATING TEMPERATURE

-40° to +65° Operating

ENVIRONMENTAL

Per ETS-300

WEATHERIZATION

Per IP-65 (IP-67 Optional)

LIGHTNING PROTECTION

Per EN / IEC 61000 4-5, Level 4



Product Specification

Mechanical Specifications

CONNECTORS

7/16 DIN Female (Long Neck)

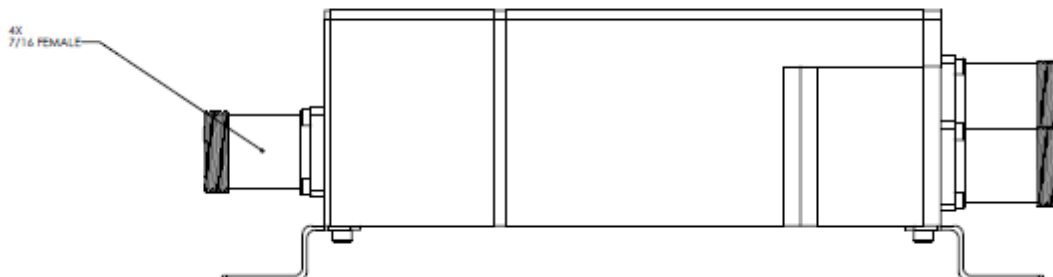
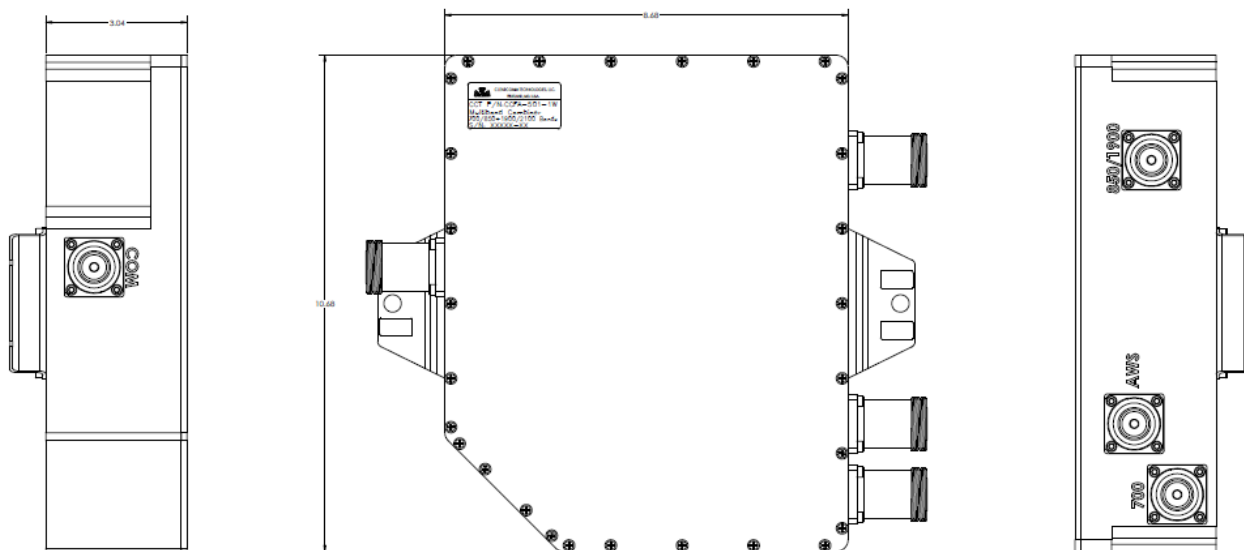
Optional: 4.3/10.0, Type 'N'

SIZE

8.7" x 10.7" x 3.0" Excluding Connectors

WEIGHT

Approx. 16 lbs.



OUTLINE DRAWING